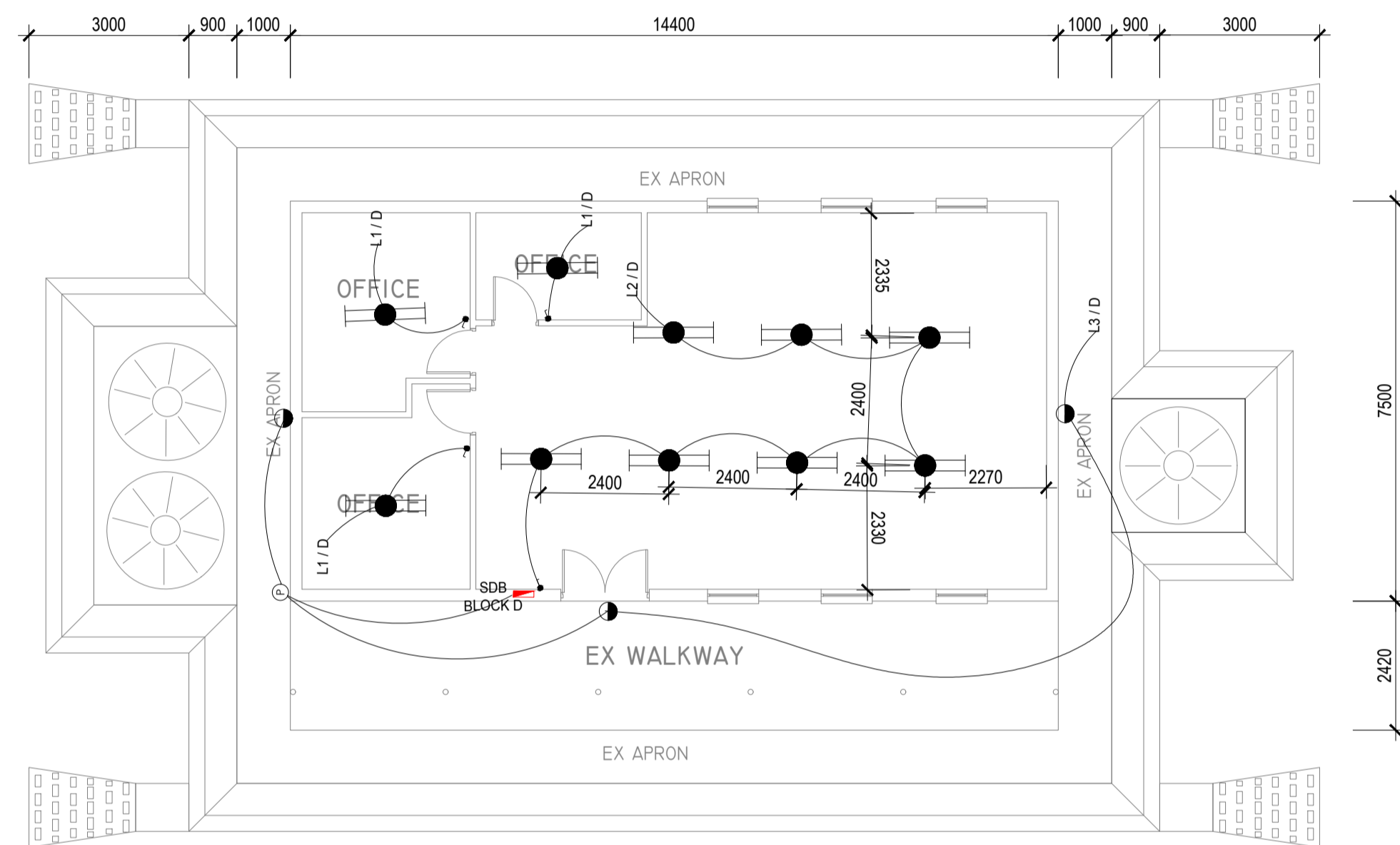
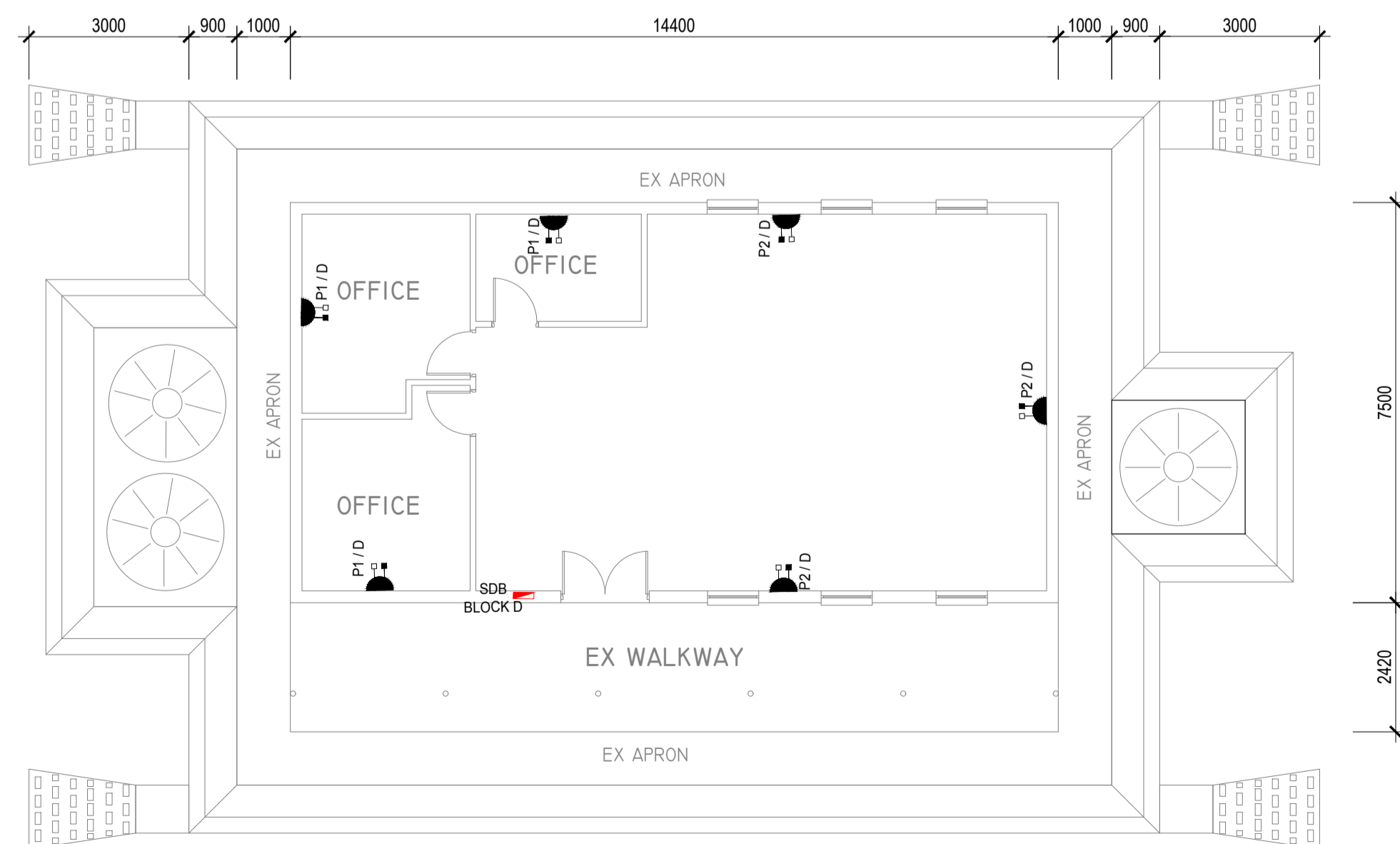


BLOCK D - ROOF PLAN 1:100



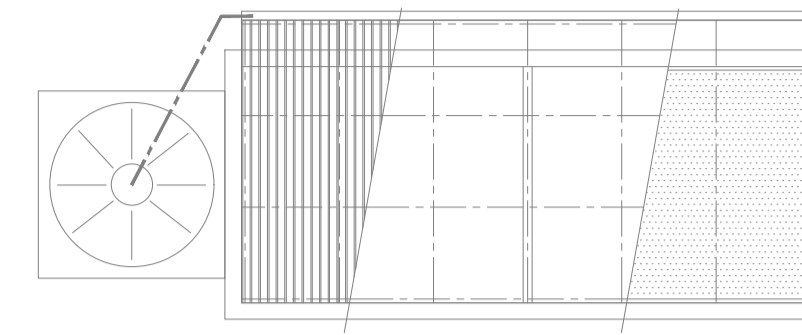
BLOCK D - FLOOR PLAN 1:100

BLOCK D Lighting layout

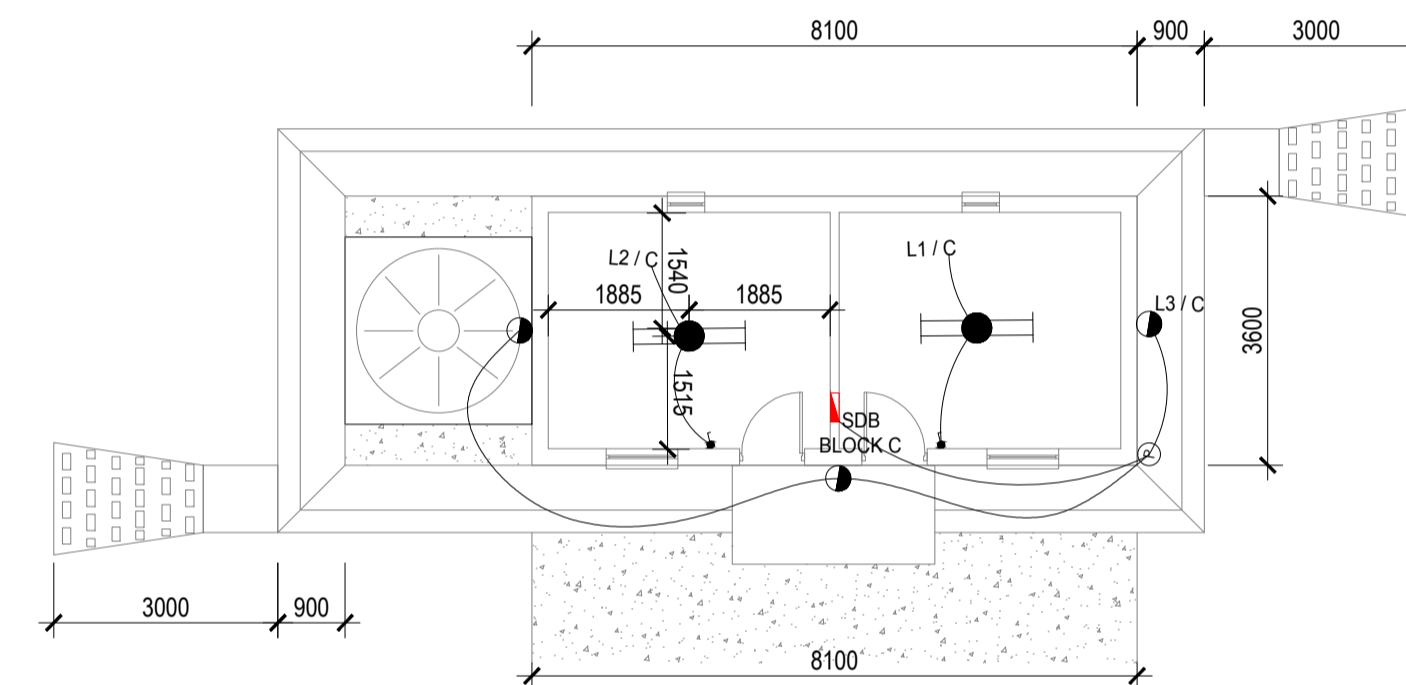


BLOCK D - FLOOR PLAN 1:100

BLOCK D Power layout

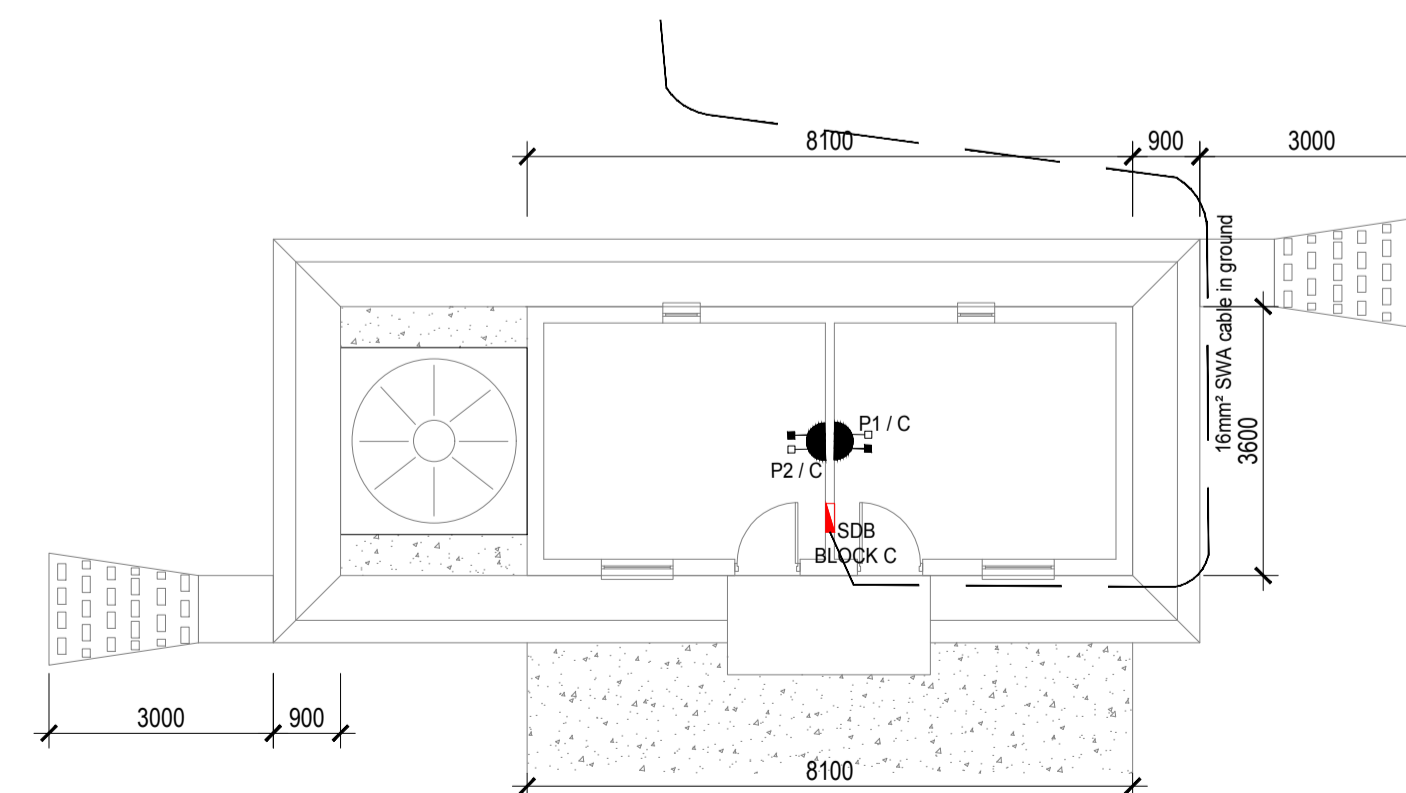


BLOCK C - ROOF PLAN 1:100



BLOCK C - FLOOR PLAN 1:100








BLOCK C Lighting layout


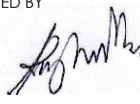



BLOCK C - FLOOR PLAN 1:100

BLOCK C Power layout

- ## GENERAL NOTES
1. The installation is to comply in full to the latest SANS 10142 standards and specifications.
 2. All SSO must be installed in accordance with new gazetted regulations and in accordance to SANS 10142 and Department of Education regulations and specifications.
 3. The electrical installation shall be in accordance to the standards and regulations prescribed by SANS for the installation of electrical services.
 4. All electrical equipment to be SABS approved.
 5. It is the responsibility of the installation contractor to ensure all and every aspect of the electrical installation is in accordance to required standards and regulations prescribed by South African standards for the wiring of premises and in accordance to the Department of Education, Province of KwaZulu Natal specifications and regulations.
 6. Each sub distribution board and Telkom distribution tray to be earthed.

LEGEND	
	1500mm OPEN CHANNEL FLOURESCENT FITTING EQUAL TO LASSCON RITA, FITTED WITH 2x OSRAM STBALU-EW 22.5W/840 1500mm 3600 LUMENS
	LIGHT SWITCH
	ROUND LED BULKHEAD WITH DIE-CAST ALUMINIUM BASE (WHITE) AND OPAL HIGH IMPACT ACRYLIC DIFFUSER, EQUAL TO BEKA 300 SERIES BULKHEAD PWLED 1470 LUMENS - WALL MOUNTED.
	1/6 3-PIN & NEW ISA EURO
	SINGLE PHASE ISOLATOR
	DISTRIBUTION BOARD
	DAY/NIGHT SENSOR

-	ISSUED FOR TENDER:				14.09.2022
REVISIONS					
CLIENT					
					
PROJECT NCEKUYA PRIMARY SCHOOL EMIS 500342213 KING CESHWAYO DISTRICT UMLALAZI LOCAL MUNICIPALITY					
DESCRIPTION BLOCK C & D ELECTRICAL SERVICES					
STATUS	INFORMATION			CONSTRUCTION	
	TENDER		X	AS BUILT	
DRAWING NO 21D_104	SCALE AS SHOWN	PAGE SIZE A1	DRAWN CD	APPROVED BY Drawn By: In-charge Registration number: EC&A Registration no.: 20002046 	REV -
<div style="display: flex; align-items: center;">  <div style="margin-left: 20px;"> <h1>e - CONSULTING</h1> <p>Electrical • Electronic and Energy management services</p> </div> </div>					
UNIT 8 WOODLANDS HOUSE 17A WOODLANDS ROAD WOODSTOCK - 8001 TEL: 021 447 8830 email: admin@ecconsulting.co.za					